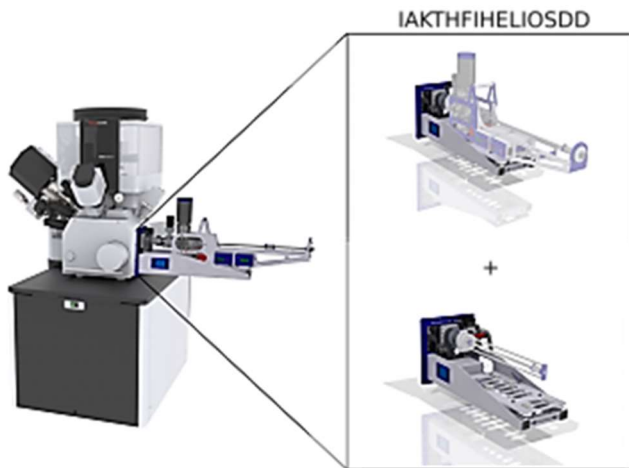


Direct Docking Kit for Thermo Fisher Helios DualBeam™ FIB-SEM

Product code: IAKTHFIHELIOSSD



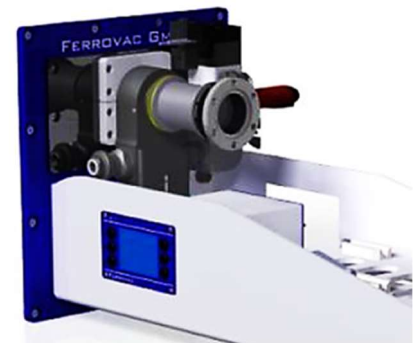
A direct docking package UHVCTM to Helios, without QuickLoader- i.e. attach the UHVCTM to the main chamber (Port L) and transfer the sample carrier directly from the UHVCTM, through the Port L onto the FIB-SEM stage. By adding a DN40KF transfer arm, this configuration can also be used as a simple load-lock to quickly introduce samples without venting the entire instrument.

We currently provide 3 different docking solutions for the Thermo Fisher Helios system: A Direct Docking (DD), Fast

Loader (FL) and Quick Loader (QL) solution. For direct comparison, please consult our [製品カタログ\(pdf\)](#). The Direct Docking is the best option if the end user wants to mainly transfer samples from the UHVCTM and only occasionally wants to load samples directly into the FIB-SEM.

Main features:

- Cost effective and simple
- Direct loading of samples by means of additional transfer arm
- Docking of UHVCTM
- Linear support sledge for UHVCTM
- Valve controller and interface
- Free inner diameter of transfer flanges: 38mm



Specifications: Direct Docking Kit for Thermo Fisher Helios DualBeam™ FIB-SEM

Contains the following items:

- ThermoFisher Port L to DN40-ISO-KF adapter package
- Gate Valve Series 012 DN40KF Pneumatic actuator, position indicator, solenoid valve double acting, 2x KF 16 side ports
- Tee 2x DN40KF 1x DN16KF L=60mm
- Angle Valve DN16KF, pneumatic with pos. indicator, solenoid valve, closing spring
- Venting Valve, Solenoid 24V DC, G1/8" normally closed
- TPR 280 Active Line Pirani Gauge DN16 ISO KF
- UHV Suitcase Support Sledge
- Mechanical Support Structure for Helios DualBeam FIB-SEM Docking Station
- 3x GAKF40CI - FPM Gasket DN40KF, Centered Internally
- Roughing Line Components for Helios Direct Docking Instrument Adaptation
- LSC1 - Programmable Control Unit for Vacuum Systems
- Cable Kit for Helios Direct Docking Instrument Adaptation for UHVCTM
- Optional: Edwards Dry Scroll Vacuum Pump, 103l/min (6.2 m³/h)

- Optional: Transfer Arm End Effector for specific Sample Holder