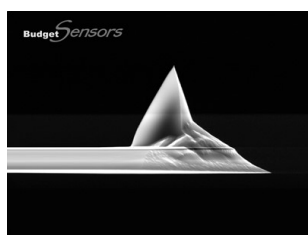


## カンチレバー : Standard Tapping Mode AFM Probes

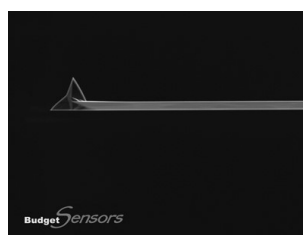
製品コード : Tap300-G | Tap300Al-G | Tap190-G | Tap190Al-G



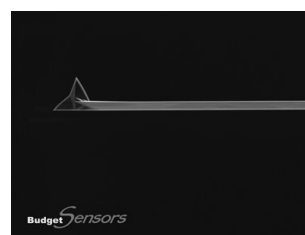
Tap300-G



Tap300Al-G



Tap190-G



Tap190Al-G

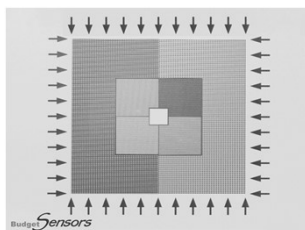
【仕様】	Tap300-G	Tap300Al-G	Tap190-G	Tap190Al-G
共振周波数	300kHz	300kHz	190kHz	190kHz
バネ定数	40N/m	40N/m	48N/m	48N/m
長さ	125μm	125μm	225μm	225μm
幅	30μm	30μm	38μm	38μm
厚さ	4μm	4μm	7μm	7μm
コーティング	—	反射アルミニウム	—	反射アルミニウム

### AFM Probes :

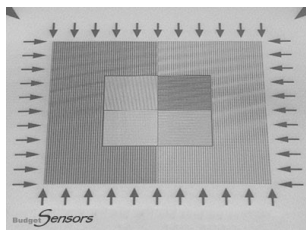
- (1) Standard Tapping Mode AFM Probes
- (2) Soft Tapping Mode AFM Probes
- (3) Force Modulation AFM Probes
- (4) Contact Mode AFM Probes
- (5) Gold Coated AFM Probes
- (6) Conductive AFM Probes
- (7) High Resolution AFM Probes
- (8) Diamond and DLC Coated AFM Probes
- (9) All-In-One AFM Probes

## キャリブレーション : Calibration Standard

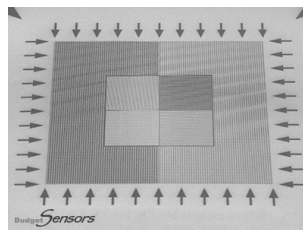
製品コード : CS-20NG | HS-20MG | HS-100MG | HS-500MG



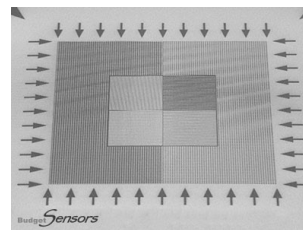
CS-20NG  
Step Height: 20nm



HS-20MG  
Step Height: 20nm



HS-100MG  
Step Height: 100nm



HS-500MG  
Step Height: 500nm